

Top Flite P-47 Gear Installation Addendum

Thank you for buying Century Jet Models replacement landing gear for the Top Flite P-47 ARF!

You have three landing gear options depending on what you desire as an end result.

Option 1: Install the gear using the supplied tire. Offset strut will hang out slightly below the wing.

Option 2: Install the gear with an after-market tire. Offset strut will hang out slightly below the wing.

Option 3: Modify the landing mount, use an after-market tire with the strut even with the wing.

Caution: The wheel well liner is made from fiberglass. When removing or sanding fiberglass material, use a mask to prevent dust ingestion.

General Steps for all options.

Step 1. Mark the area where the scissors will go into the wing. Photo 1.

Step 2. Using a Dremel, remove the fiberglass area. Photo 2.

Step 3. Remove the wood just exposed to the scissor links will go into the wing.

Step 5. Remove the fiberglass area so the nylon barb fitting can slide under the mounting rail. If you selected Option 3, remove an additional 1/4" for nylon 90 degree barb installation. Photo 3

Option 1.

Step 1. Install the supplied foam tire on the landing gear. Spacers may be required.

Step 2. Remove excessive axle material.

Step 4. Install the landing gear. Photo 4. Follow procedures in Centurion Instruction Manual. Use Slow Set J.B. Weld in Step 6.

Step 5. Put a board or straight object behind both tires and using a carpenter square, align both tires. Tighten set screws and let set. See Photo 12.

Option 2.

Step 1. Remove the fiberglass wheel well liner using a Dremel tool. Use caution as the front of the liner sits next to the wing skin. Photo 5.

Step 2. Complete option 1 except use an after-market tire. Photo 6.

Option 3.

Step 1. Complete steps in Option 1 and 2.

Step 2. Cut two pieces of 1/4" plywood 1/2" x 2 3/8" and two pieces 1/4" plywood 1/2" x 2 5/8" (not supplied)

Step 4. Place the landing gear on the original mounting rails and mark the landing gear body area.

Step 5. Using a saw, remove the original mounting rail area just marked.

Step 6. Epoxy the plywood pieces to the underside of the landing gear rails. Picture 8 shows the back plywood which is 1/4 x 1/2 x 2 3/8. Picture 9 shows the front plywood (1/4" plywood 1/2" x 2 5/8). Photo 10

Step 7. Remove fiberglass material for the landing gear piston. Photo 11.

Step 8. Mount the landing gear.

Step 9. Align the landing gear and use J.B. Weld. Photo 12

Step 10. Mount landing gear doors. Photo 13

Photo 1



Photo 2

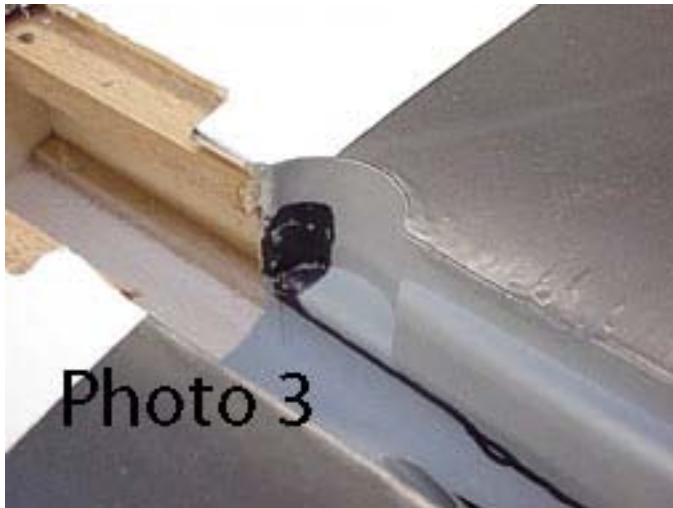
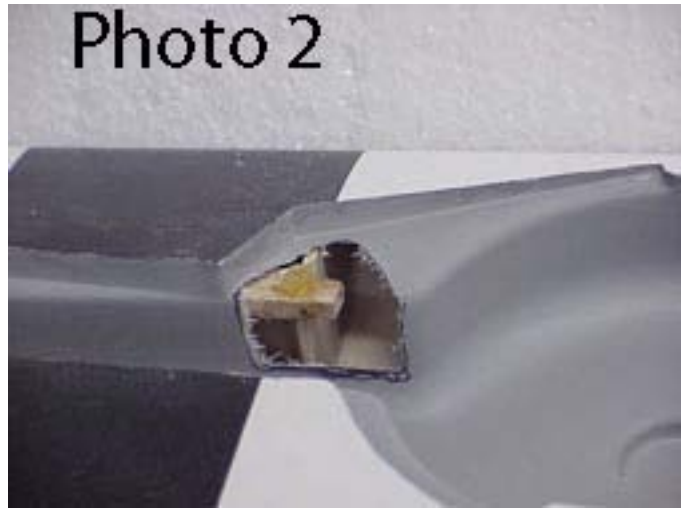


Photo 3

Photo 4

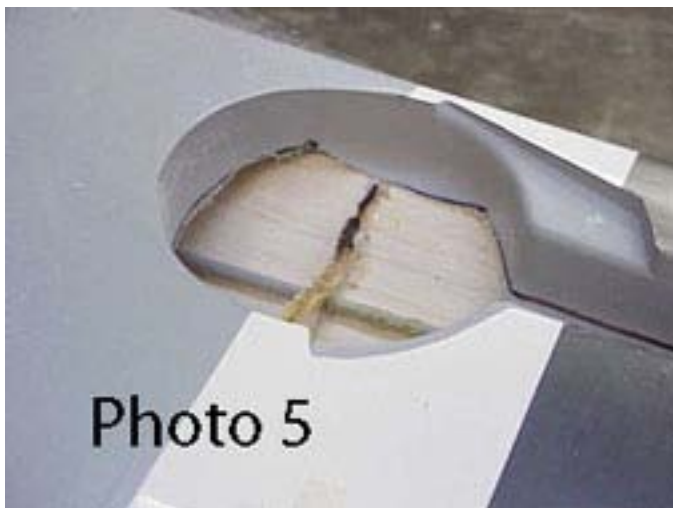
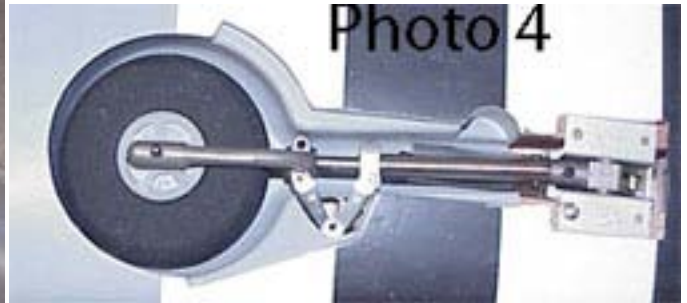


Photo 5



Photo 6

Photo 8

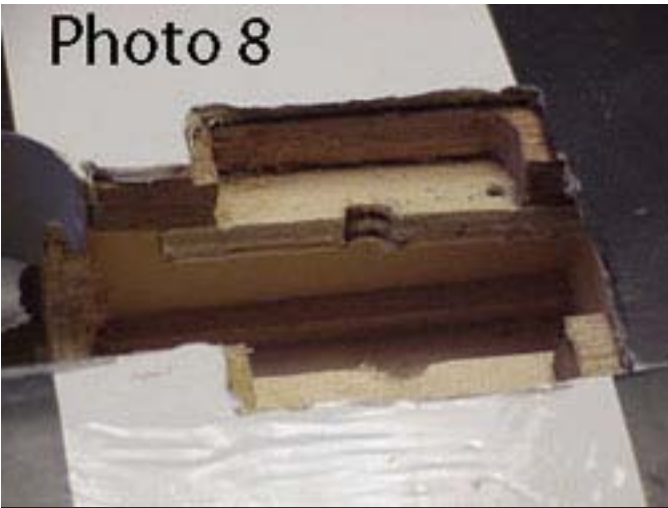


Photo 9

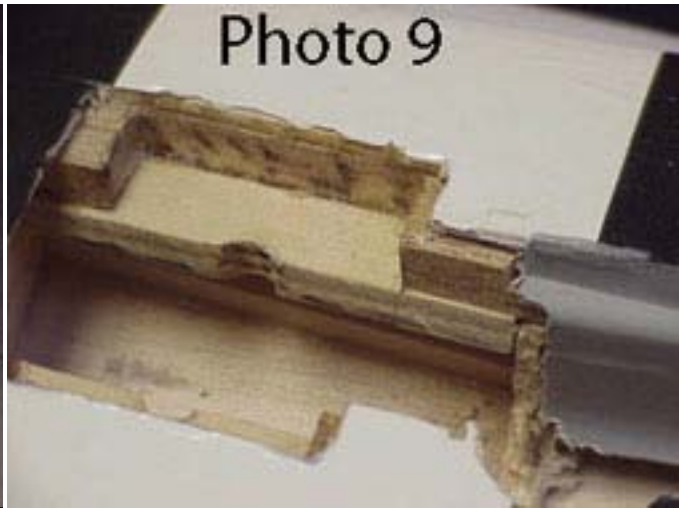


Photo 10

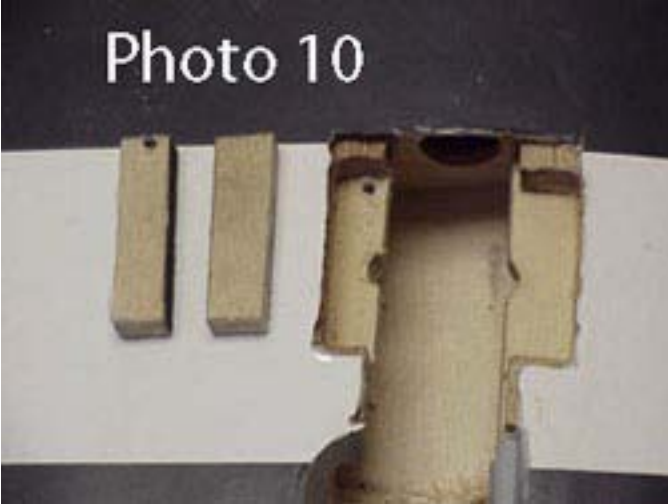


Photo 11

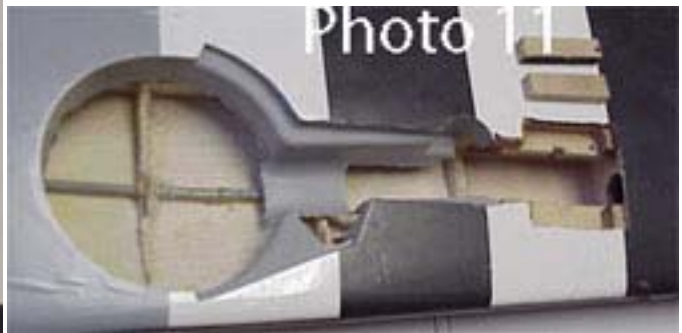


Photo 12



Photo 13

